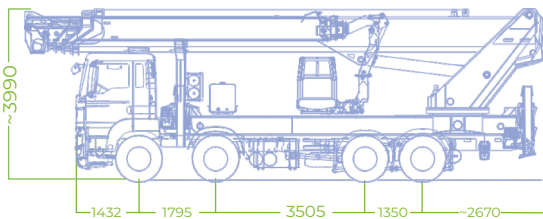
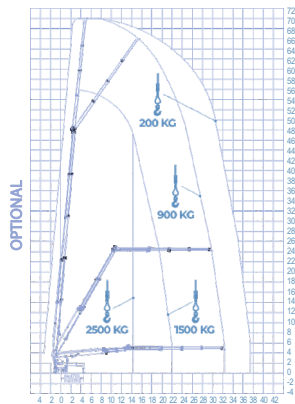
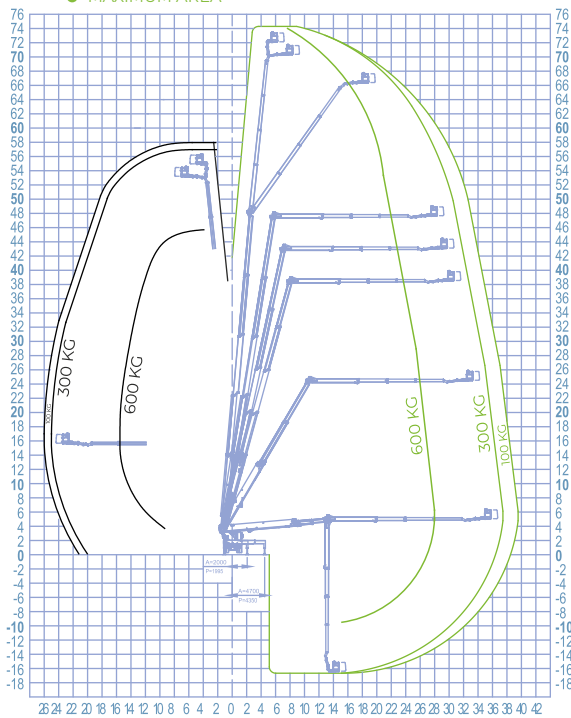




WORKING DIAGRAM

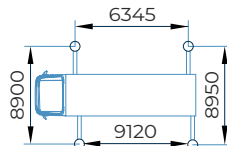
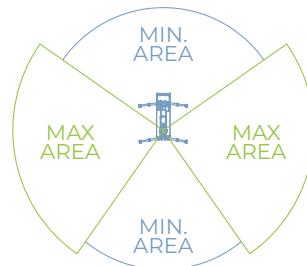
- WORKING AREA WITH IN-SHAPE STABILIZATION
- MAXIMUM AREA



MAN TGM 18.290 - 4X2 BB CH - PASSO 3875

INFO

- OUTRIGGERS**
HE+HE
- WORKING HEIGHT**
74,50 m
- BASKET HEIGHT**
72,50 m
- MAX OUTREACH**
39,50 m
- BASKET LOAD CAPACITY**
600 kg
- BASKET SIZE**
2300/3600x900x1100 mm
- BASKET ROTATION**
360°
- CONTROLS**
Electric
- TURRET ROTATION**
700°
- GVW**
32 ton



DIMENSIONS STABILISERS WITH MAX AREA

STANDARD ACCESSORIES

DATA SHEET

- SOCAGE convertible basket possibility (Eternit)
- 2nd Jib 180° manual rotation
- Possibility of winch on removable JIB
- Automatic stabilization
- Partially stabilized working areas
- Automatic closing
- Basket control station with console on Socage design including joystick and 7 "LCD display with real-time information
- Intercom with headphones for basket-ground communication
- Main and auxiliary motor start/stop control from the basket
- Multifunction radio remote control for emergency control of the aerial part from the ground and stabilization
- 2 fixed roto-lamp on the vehicle cabin
- Socket 230V/400V
- Heat exchanger on the hydraulic system
- 2 folding sides, 2 fixed (h 150 mm)
- 4 outrigger plates
- Anti-corrosion treatment on unpainted components

SAFETY DATA

- Emergency button
- Emergency manual hand pump
- Automatic PTO deactivation
- Cross-check of open stabilizers
- Anemometer
- Load limiter in the basket
- Moment limiter with double safety and control of correct operation
- Multi axial device for visual control of frame stabilization
- Emergency descent with electric pump (in the absence of the auxiliary motor)
- Rotation brake of the turret with automatic insertion
- Hydraulic system with differentiated filtering with high efficiency filters both on the delivery lines and on the return lines
- Multifunction radio control for emergency control
- Automatism for rotation lock with extension of the stabilizers on one side only
- Chassis flatness sensor
- Flanged block valves

