

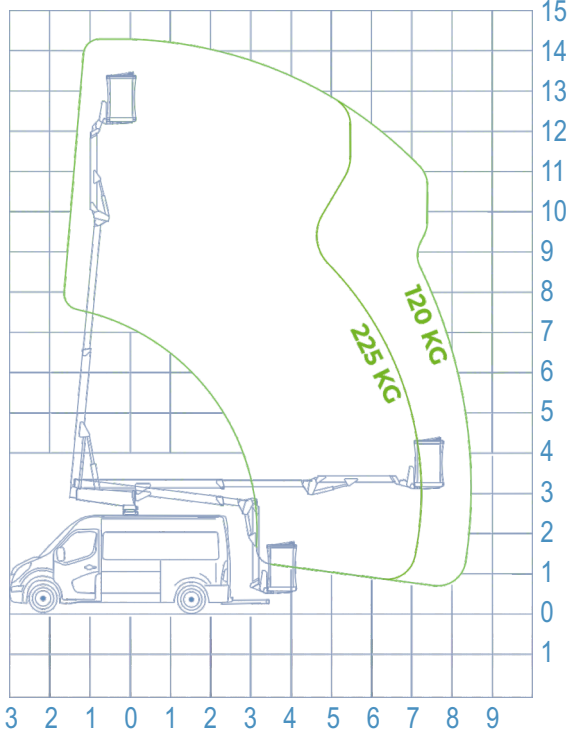


**WORKING DIAGRAM**

**INFO**

**STANDARD ACCESSORIES**

MAXIMUM AREA



- OUTRIGGERS**  
A

---

- WORKING HEIGHT**  
14,40 m

---

- BASKET HEIGHT**  
12,40 m

---

- MAX OUTREACH**  
8,50 m

---

- BASKET LOAD CAPACITY**  
225 kg

---

- BASKET SIZE**  
1400x700x1100 mm

---

- BASKET ROTATION**  
0°

---

- CONTROLS**  
Electric

---

- TURRET ROTATION**  
400°

---

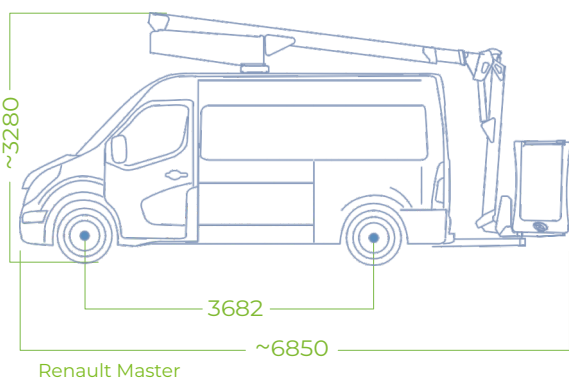
- GVW**  
3,5 ton

**DATA SHEET**

- Cables and hoses installed inside the boom
- Articulated jib
- Proportional electro-hydraulic controls with speed regulation of all movements
- Stabilization controls from the basket and from the ground
- Possibility of simultaneous movements
- Engine start/stop from the basket
- 230V and 12V socket in the basket
- CAN BUS electronic management system
- Cataphoresis treatment

**SAFETY DATA**

- Unintentional maneuver protection bar
- Circuit breaker with differential protection on the 230V line
- Automatic levelling of the basket
- Inclinator
- Flanged block valves
- Emergency button
- Emergency manual hand pump
- Electrical hour counter
- 12V emergency electric pump
- Digital hour-counter
- Automatic PTO disengagement



MAXIMUM AREA

